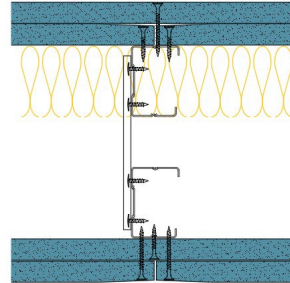


TWC50-K-60(50)(200) - SPEEDLINE System Data Sheet - Version V1 (24-10-23)

Twin SPEEDLINE 50mm 'C' Stud Braced Partition
 @600mm Ctrs, with 2x Knauf 15mm Soundshield
 Plus each side, 50mm APR



System Performance Breakdown

Fire Resistance:

BS476 Part 22:1987:

Test Ref & Date or Applied Ref & Report:

Max Height:

Thickness:

Duty Grade: BS 5234: Part 2:1992:

Sound Insulation:

120/120 Minutes (Integrity/Insulation).

BMT/FEP/F14077 - BRE Report P102396-1011B

Refer to Speedline Specification Clause

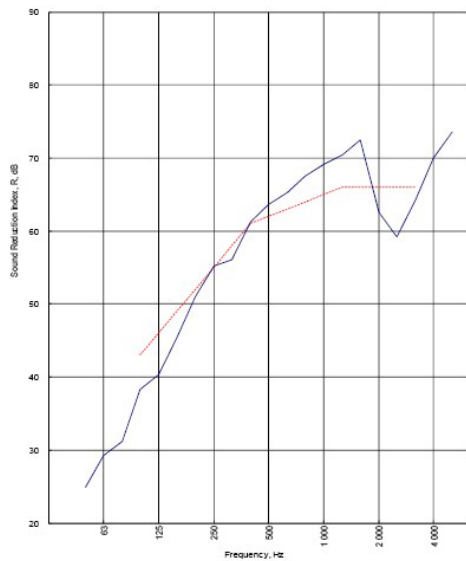
200 mm. (At Base Track, Excluding Finishes)

Severe - Annexes A-F

62 R_w dB-7Ctr, Date Tested or Assessed Against - 06/01/2014

Test Code:
H18533AA
Test Date:
06/01/2014

Freq. Hz	R dB
50	24.9
63	29.2
80	31.2
100	38.3
125	40.3
160	45.3
200	51.0
250	55.2
315	56.1
400	61.3
500	63.6
630	65.3
800	67.5
1000	69.1
1250	70.4
1600	72.5
2000	62.5
2500	59.2
3150	64.3
4000	70.0
5000	73.5



Rating according to BS EN ISO 717-1:2013 **R_w (C;Ctr) = 62 (-2;-7) dB**
 Max dev. 6.8 dB at 2500 Hz

Evaluation based on laboratory measurement results obtained by an engineering method:

$C_{50-3150} = -5$ dB	$C_{90-5000} = -4$ dB	$C_{100-5000} = -1$ dB
$C_{0-50-3150} = -16$ dB	$C_{0-50-5000} = -16$ dB	$C_{0-100-5000} = -7$ dB

TESTED AT ONE OF THE UKAS ACCREDITED LABORATORIES BELOW

- B.T.C (H-Ref on Graph)
- B.R.E
- AIRO
- S.R.L

Customer: Metsec plc Hepsec Division

BTC 18533A: Page 10 of 13

